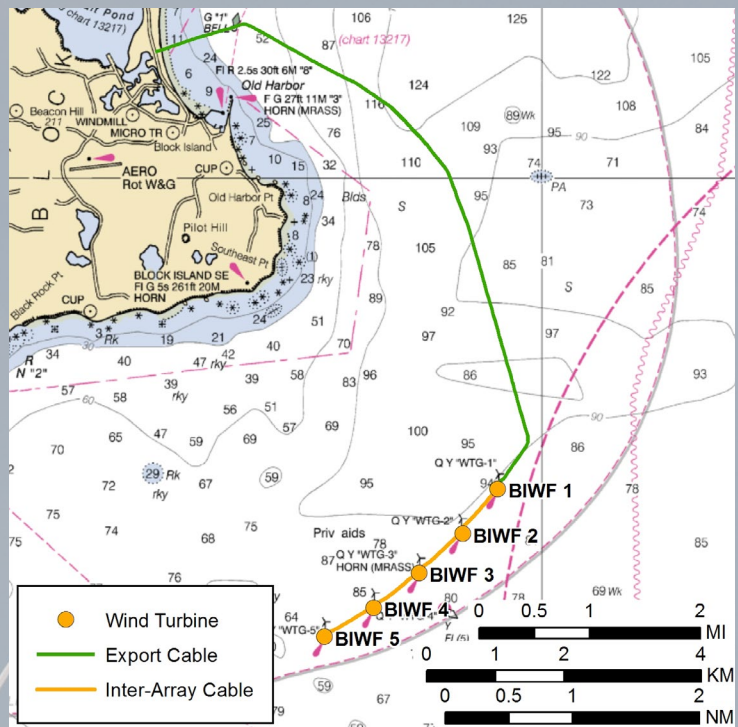




BLOCK ISLAND WIND FARM

INFORMATION FOR MARINERS



OVERVIEW

The Block Island Wind Farm (BIWF) is a 30 megawatt offshore wind farm located approximately 3 miles southeast of Block Island, RI. The BIWF consists of five, 6 megawatt wind turbines, a submarine cable connecting the turbines (inter-array cable), and a submarine cable from the northernmost turbine to an interconnection point on Block Island (export cable).

The construction of the five turbines and the transmission cables was completed in 2016. The BIWF team has worked closely with mariners, including commercial and recreational fishing groups, to minimize impacts to the extent possible. Notices to Mariners are submitted as needed to the U.S. Coast Guard and distributed to the fishing community and interested mariners by the Fishery Liaison, Elizabeth Marchetti, and posted on our website at:

dwwind.com/information-for-mariners

TURBINE COORDINATES

ID	LATITUDE	LONGITUDE
BIWF 1	41° 7.546' N	71° 30.451' W
BIWF 2	41° 7.193' N	71° 30.837' W
BIWF 3	41° 6.883' N	71° 31.270' W
BIWF 4	41° 6.609' N	71° 31.744' W
BIWF 5	41° 6.380' N	71° 32.258' W

MARINER SAFETY

From time to time, we'll be performing routine operations and maintenance activities at the project site. During those times, we request that mariners transiting or fishing in the area of the wind farm provide a wide berth to support vessels. When support vessels are working at a given location, please operate at no wake speed. Please remain clear of all work platforms and attendant vessels during BIWF operations and otherwise use extreme caution when navigating in the vicinity of the BIWF.

CONTACT

JOHN O'KEEFFE
 MANAGER, O&M AND MARINE AFFAIRS

Phone: 401.868.4228
 Email: jokeeffe@dwwind.com

For fisheries related inquiries, contact:

ELIZABETH MARCHETTI
 CRMC FISHERY LIAISON

Phone: 401.954.2902
 Email: rifisheryliaison@gmail.com



Block Island Wind Farm
 Crew Transfer Vessel
Atlantic Pioneer