



SOUTH FORK WIND FARM

INFORMATION FOR MARINERS

OVERVIEW

The South Fork Wind Farm (SFWF) is a planned offshore wind farm located 30 miles east of Montauk that will consist of approximately 15 wind turbines and a subsea transmission system able to deliver 90 MW of clean energy to East Hampton. Marine survey activities are scheduled to begin in Summer 2017. Marine construction is planned to start 2021.

Notices to Mariners are submitted as needed to the U.S. Coast Guard, distributed to the fishing community and interested mariners, and posted on our website at:

dwwind.com/information-for-mariners

MARINER SAFETY

Deepwater Wind will be performing survey operations along the cable route and project site.

During those times, all mariners transiting or fishing in the survey area are requested to provide a wide berth to survey vessels as they will be limited in their ability to maneuver (VRAM) and towing gear out to 300 meters behind the vessel.

Vessels in the vicinity of the survey vessel should operate in a manner that will not endanger the vessel or associated equipment.

CONTACT

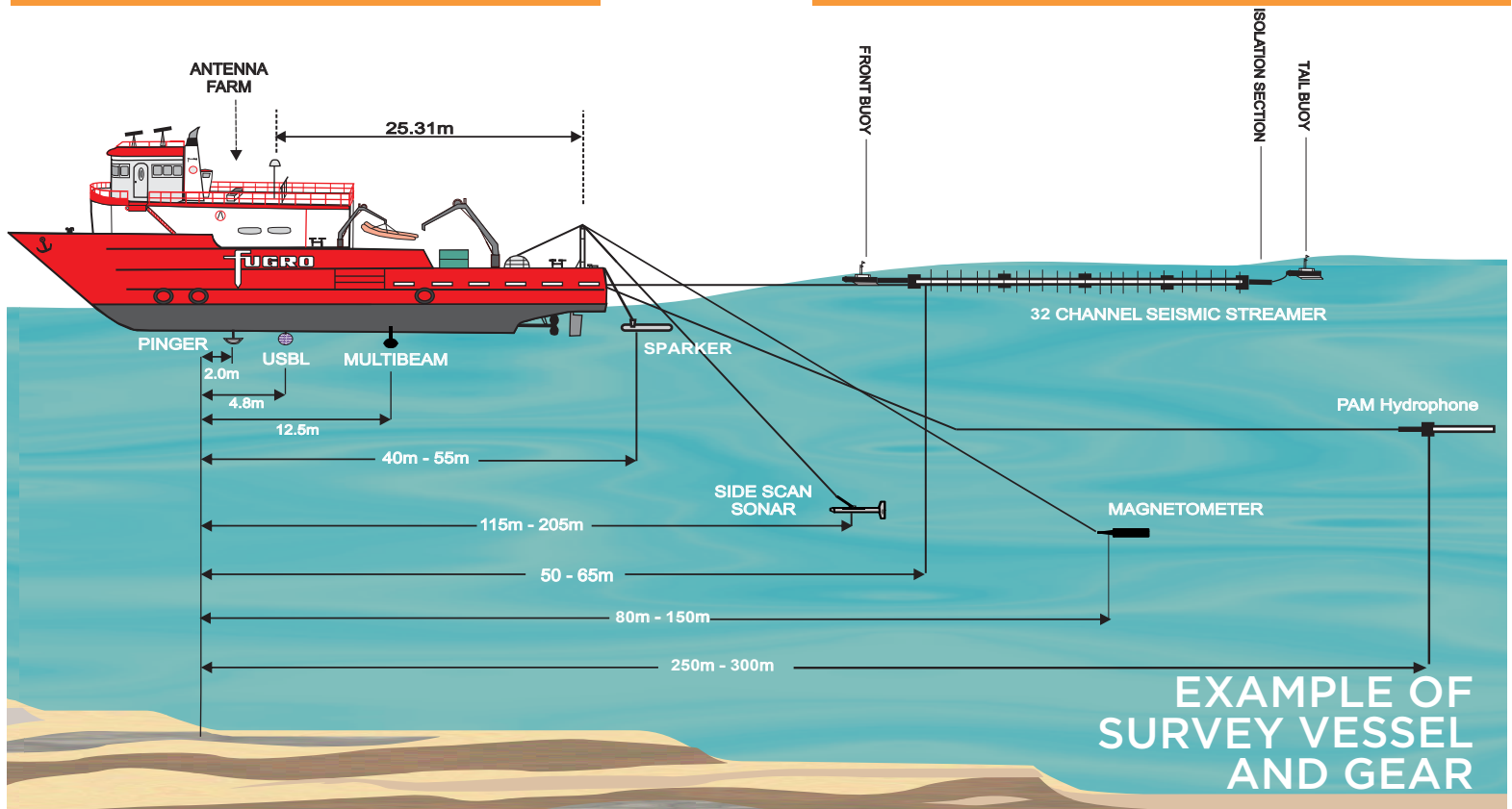
JOHN O'KEEFFE
MANAGER, O&M AND MARINE AFFAIRS

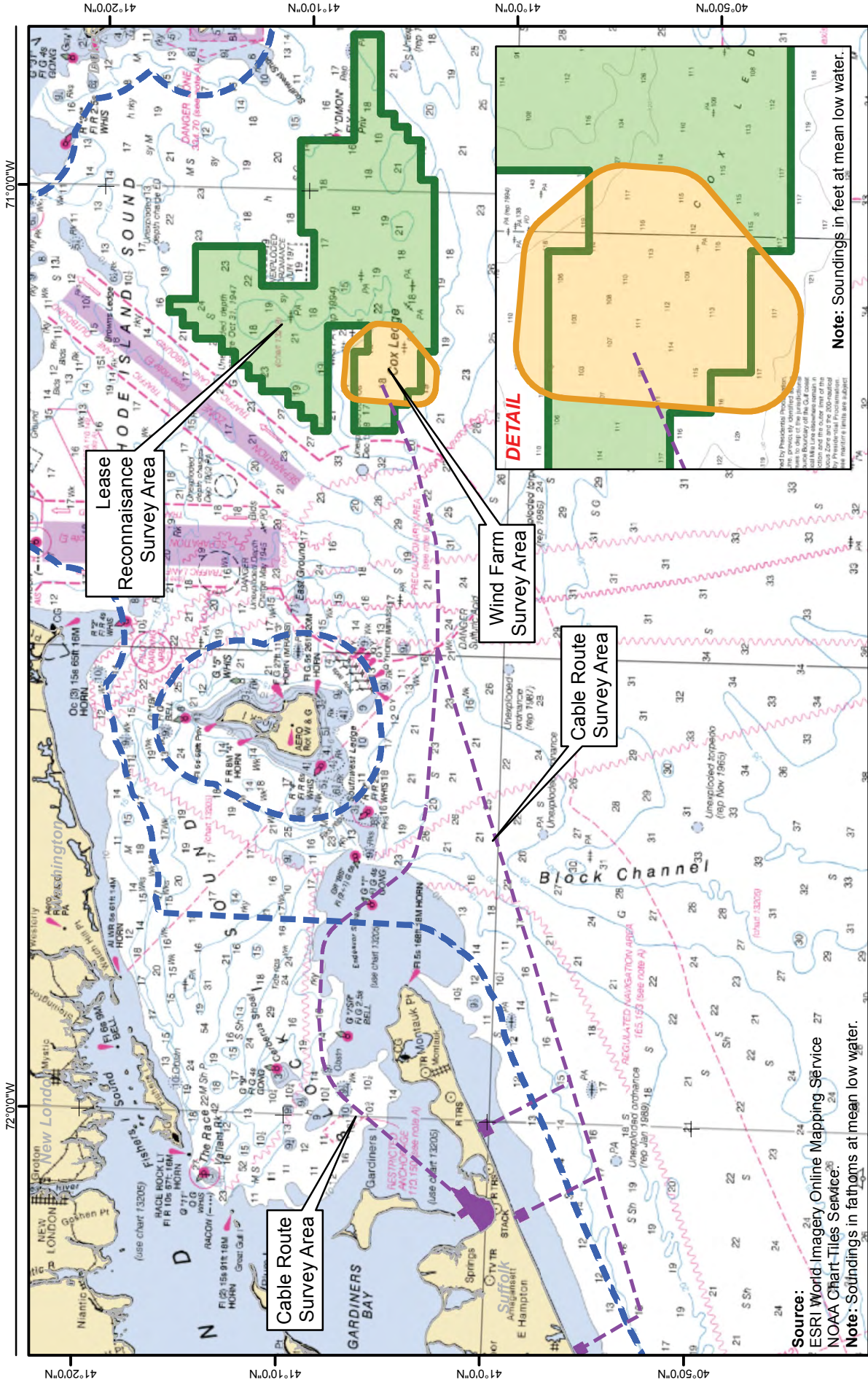
Phone: 401.868.4228
Email: jokeeffe@dwwind.com

FOR FISHERIES
RELATED
INQUIRIES,
CONTACT:

BETH CASONI
FISHERIES LIAISON

Phone: 508.738.1245
Email: fisheries_liaison@dwwind.com





Legend

- 3-mile State Waters Boundary
- Cable Route Survey Area
- Lease Reconnaissance Survey Area
- Wind Farm Survey Area

Source:
 ESRI World Imagery Online Mapping Service
 NOAA Chart-Tiles Service.

Note: Soundings in fathoms at mean low water.

Legend

**Project Study Area - South Fork Wind Farm
 Survey Areas and South Fork Export Cable
 Deepwater Wind
 New York/Rhode Island, US**

