



Mariner's Briefing

SOUTH FORK WIND FARM

Date of Notice:	08/21/2017	Notice No.	05
------------------------	------------	-------------------	----

These briefings are intended to update mariners on marine operations for the South Fork Wind Farm survey area. Deepwater Wind will be conducting survey operations along the projected cable route (see chart below) and inside our North Lease Area in relation to the South Fork Wind Farm, these operations involve only the survey phase. When completed, the South Fork Wind Farm will consist of approximately 15 advanced offshore wind turbines able to generate 90 megawatts. Depending on the schedule for permitting, construction could start as early as 2019 and the wind farm could be operational as early as 2022.

For general information on the South Fork Wind Farm, please visit: www.dwwind.com If you have any questions on the **offshore activities**, or request further information, please contact:

Captain John O'Keeffe at jokeeffe@dwwind.com or 401-868-4228.

For fishing related inquiries, please contact:

Beth Casoni at 508-738-1245

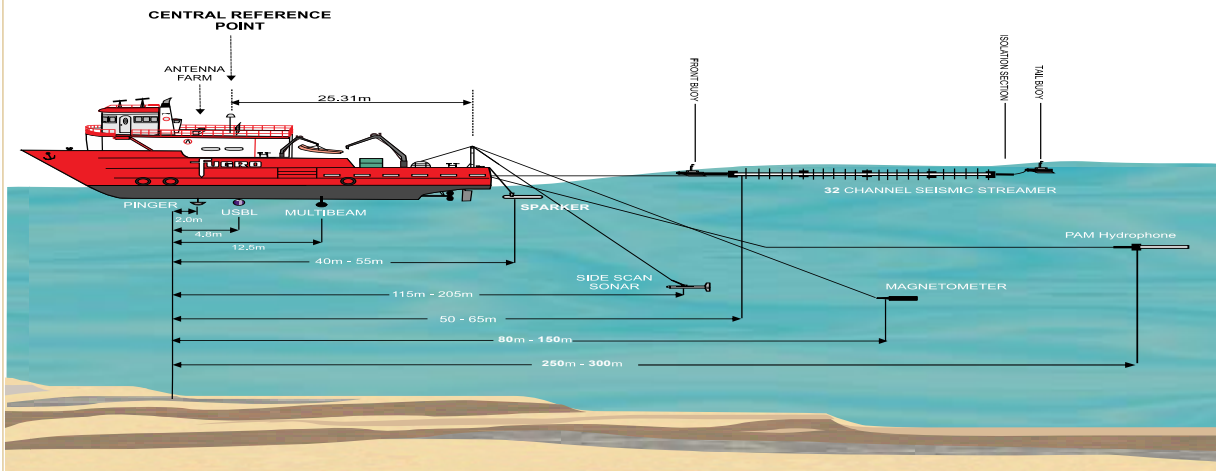
Jump drives for chart plotters are available and will be distributed upon request

Briefings will be updated as needed at www.dwwind.com

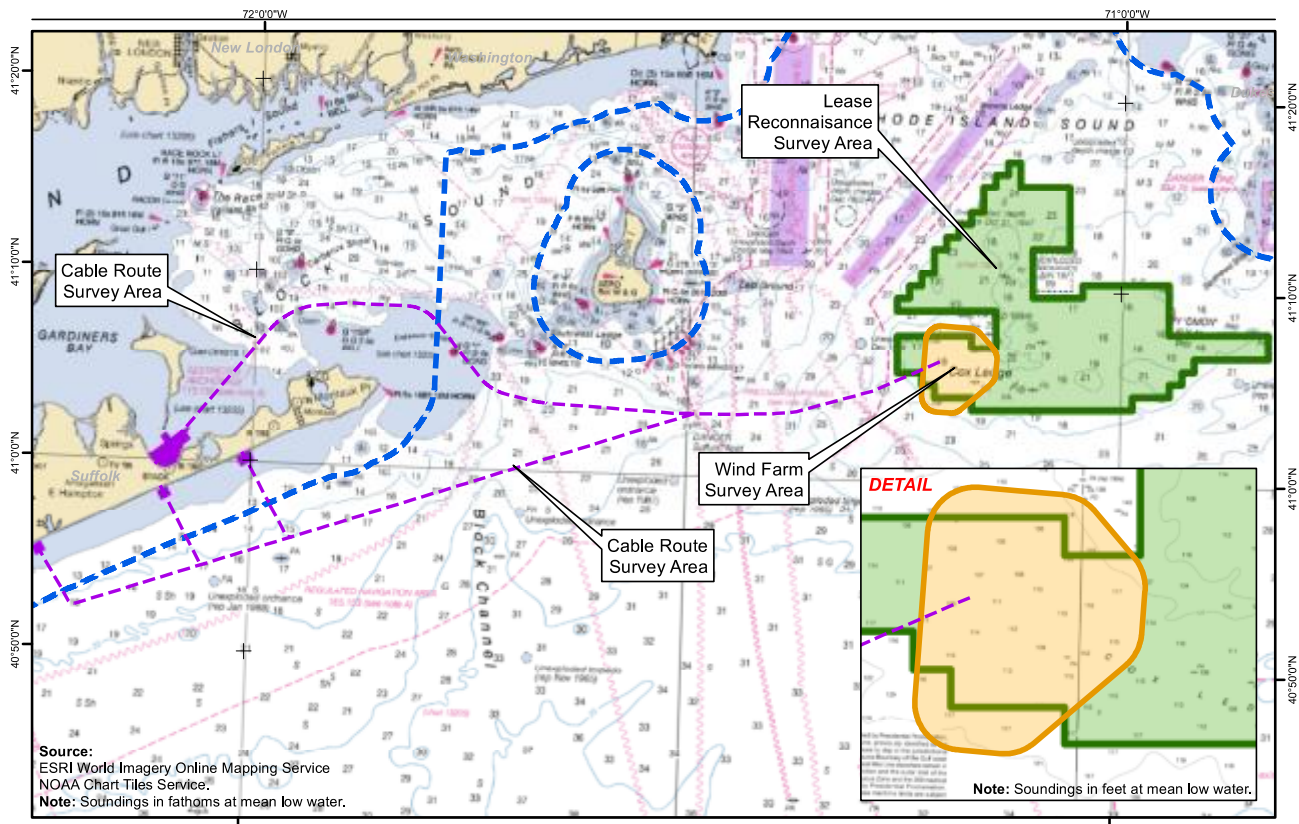
Vessel Name	Site Function	Week Of 21 August 2017	Projected Outlook
Fugro Enterprise	Primary Survey vessel	Will continue geophysical survey operations along proposed cable routes and wind farm area.	Continue geophysical survey operations along proposed cable routes and wind farm area.

****All Mariners transiting or fishing in the survey area are requested to give a wide berth to survey vessels as they will be limited in their ability to maneuver (VRAM) and towing gear out to 300 meters behind the vessel. Vessels in the vicinity of the survey vessels should operate in a manner that will not endanger the vessel or associated equipment****

**FUGRO ENTERPRISE
INSTRUMENT SETBACK DIAGRAM
DEEPWATER WIND**



INSTRUMENT SETBACK DIAGRAM - PROFILE



- Legend**
- 3-mile State Waters Boundary
 - Cable Route Survey Area
 - Lease Reconnaissance Survey Area
 - Wind Farm Survey Area

**Project Study Area - South Fork Wind Farm
Survey Areas and South Fork Export Cable
Deepwater Wind
New York/Rhode Island, US**

